

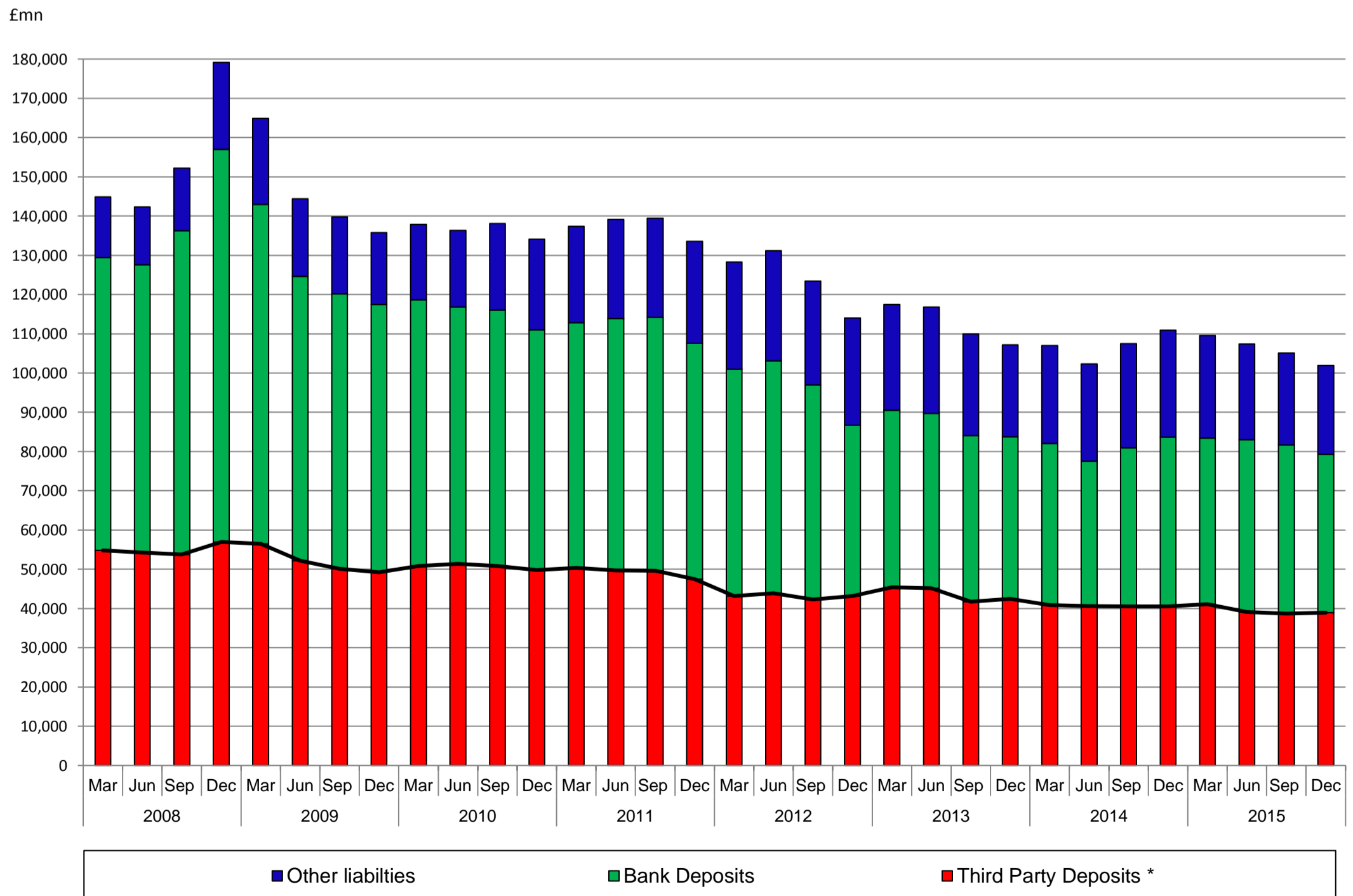
GUERNSEY FINANCIAL SERVICES COMMISSION

GUERNSEY BANKING SECTOR STATISTICS

		Number of banks	Bank Deposits £mn	Third Party Deposits £mn*	Annual change in third party deposits %	Total Deposits £mn	Other liabilities £mn e.g. capital, issues of debt	Total Liabilities £mn
2012	Mar	35	57,795	43,197	-14.2	100,992	27,280	128,272
	Jun	35	59,214	43,923	-11.7	103,137	28,033	131,170
	Sep	34	54,641	42,301	-14.7	96,942	26,517	123,459
	Dec	32	43,515	43,169	-9.0	86,683	27,365	114,048
2013	Mar	32	45,148	45,372	5.0	90,521	26,957	117,477
	Jun	32	44,528	45,163	2.8	89,691	27,160	116,851
	Sep	32	42,355	41,725	-1.4	84,079	25,866	109,946
	Dec	31	41,272	42,434	-1.7	83,705	23,440	107,145
2014	Mar	31	41,194	40,832	-10.0	82,026	24,984	107,010
	Jun	30	36,878	40,606	-10.1	77,484	24,846	102,330
	Sep	30	40,405	40,548	-2.8	80,953	26,499	107,452
	Dec	31	43,147	40,514	-4.5	83,661	27,273	110,934
2015	Mar	31	42,281	41,127	0.7	83,407	26,183	109,590
	Jun	30	43,909	39,135	-3.6	83,044	24,363	107,407
	Sep	29	42,937	38,705	-4.5	81,642	23,432	105,075
	Dec	29	40,261	38,984	-3.8	79,245	22,665	101,910

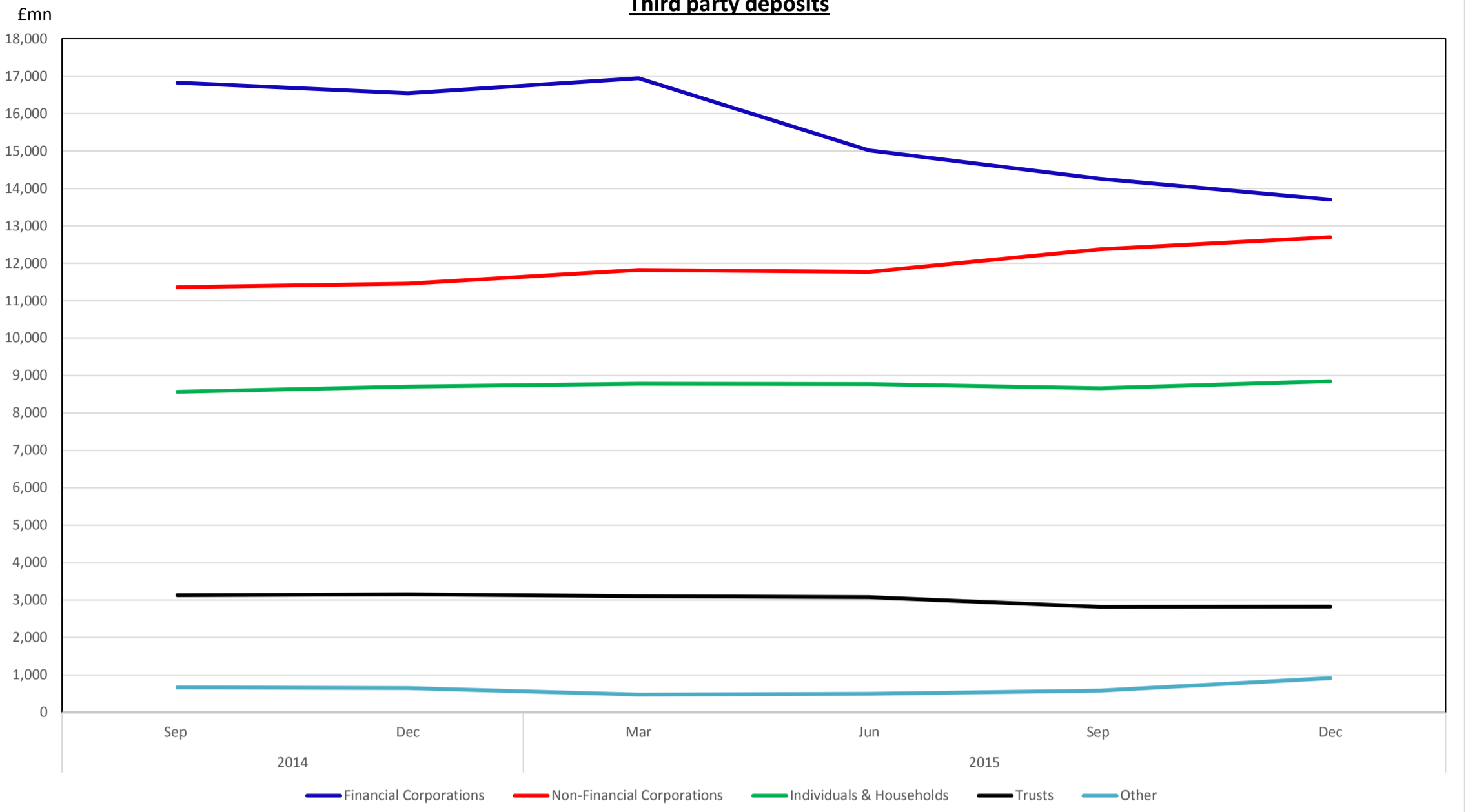
* Includes non-bank financial institutions

Guernsey Bank Liabilities

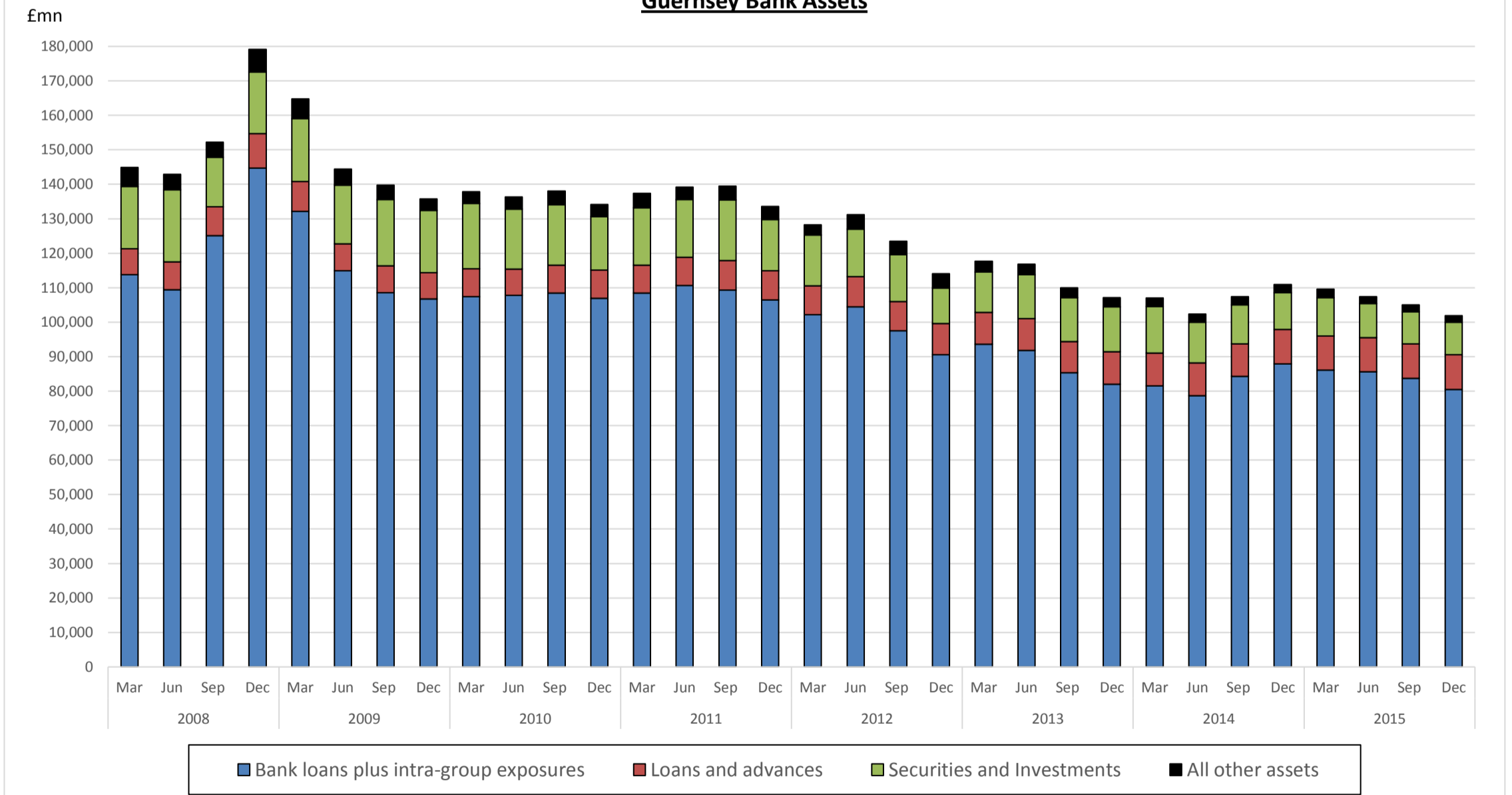


* Includes non-bank financial institutions

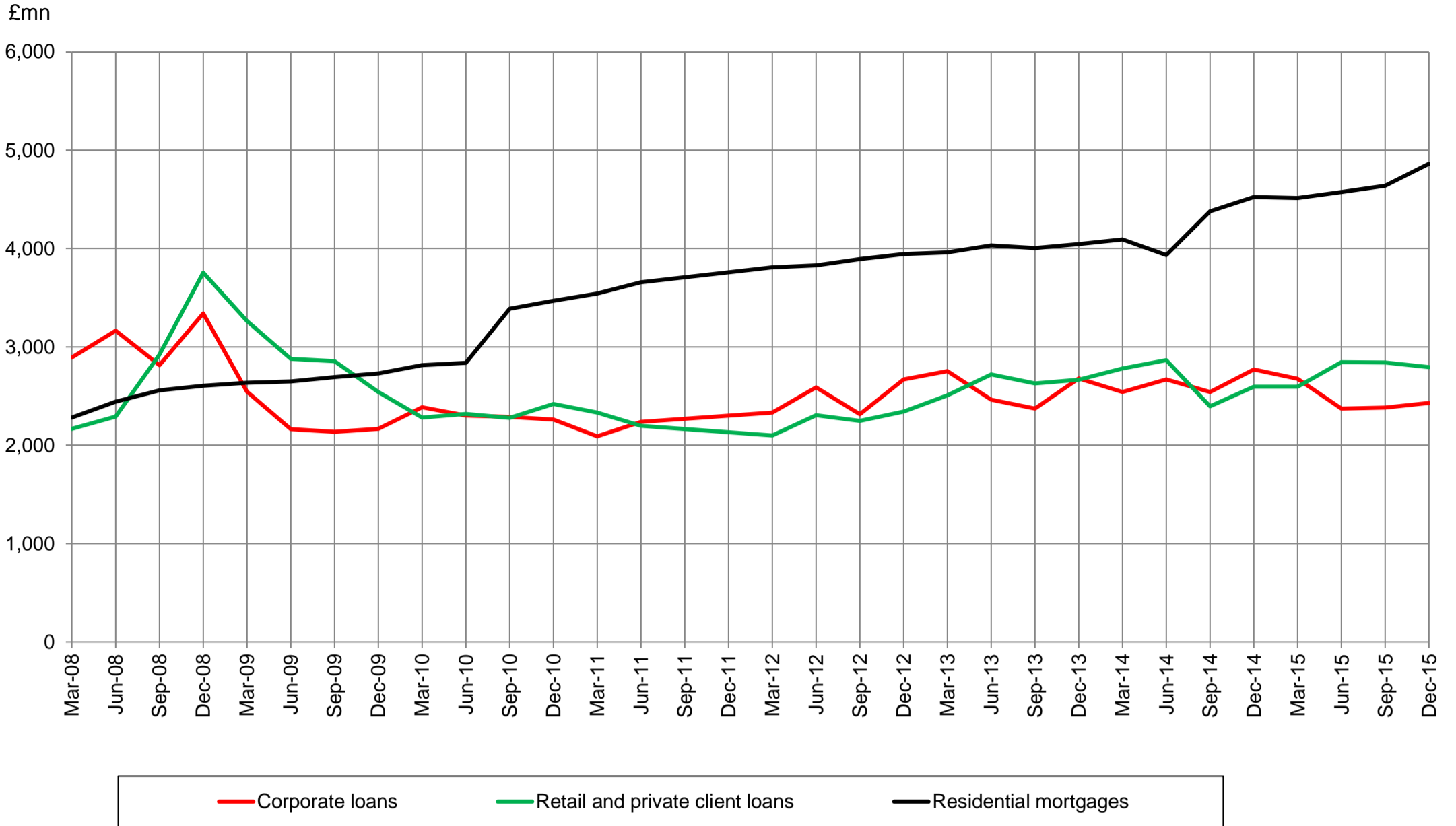
Third party deposits



Guernsey Bank Assets



Loans and advances



Total Assets, Number of Licensees and F.T.E. Staff

