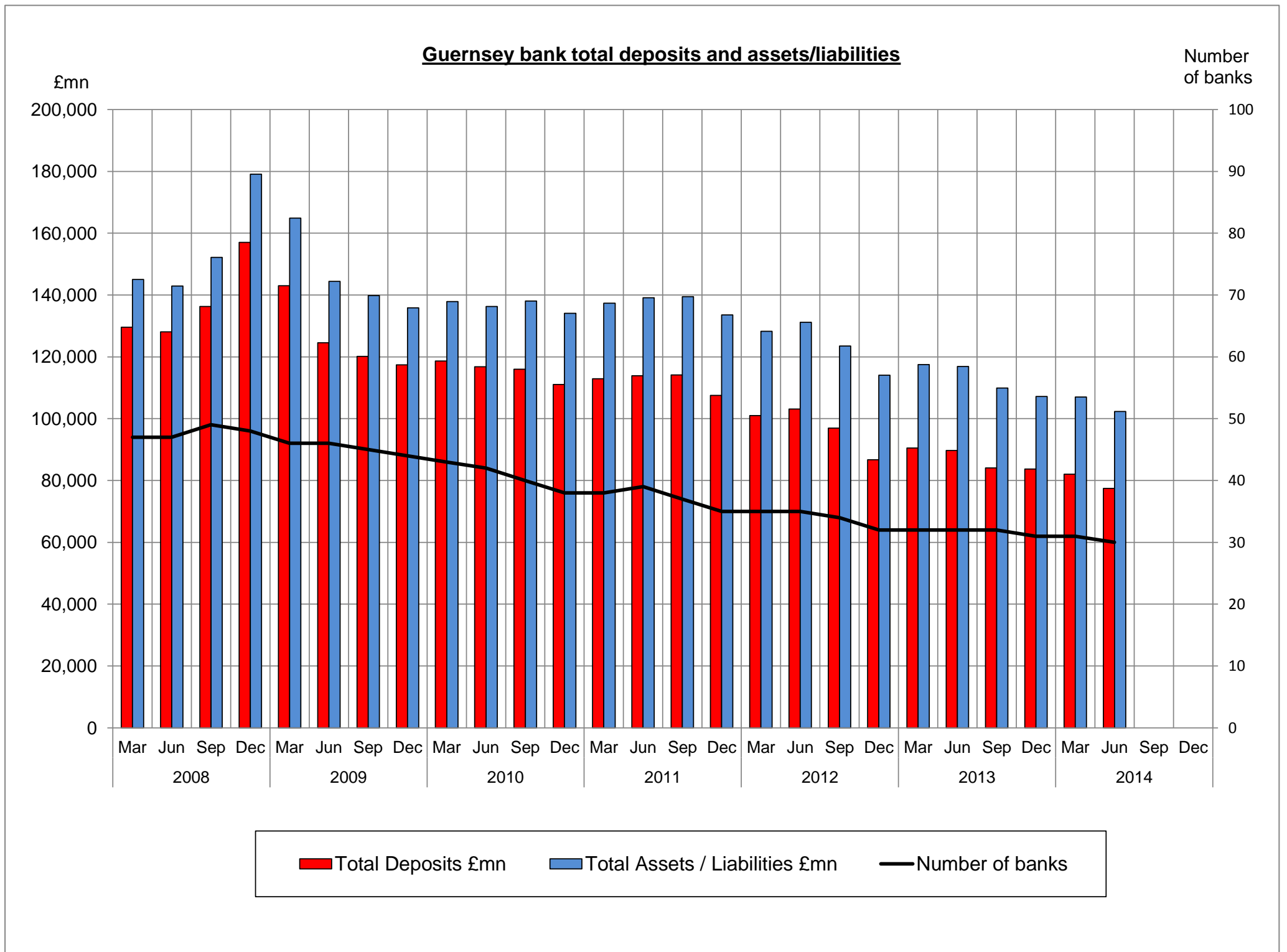


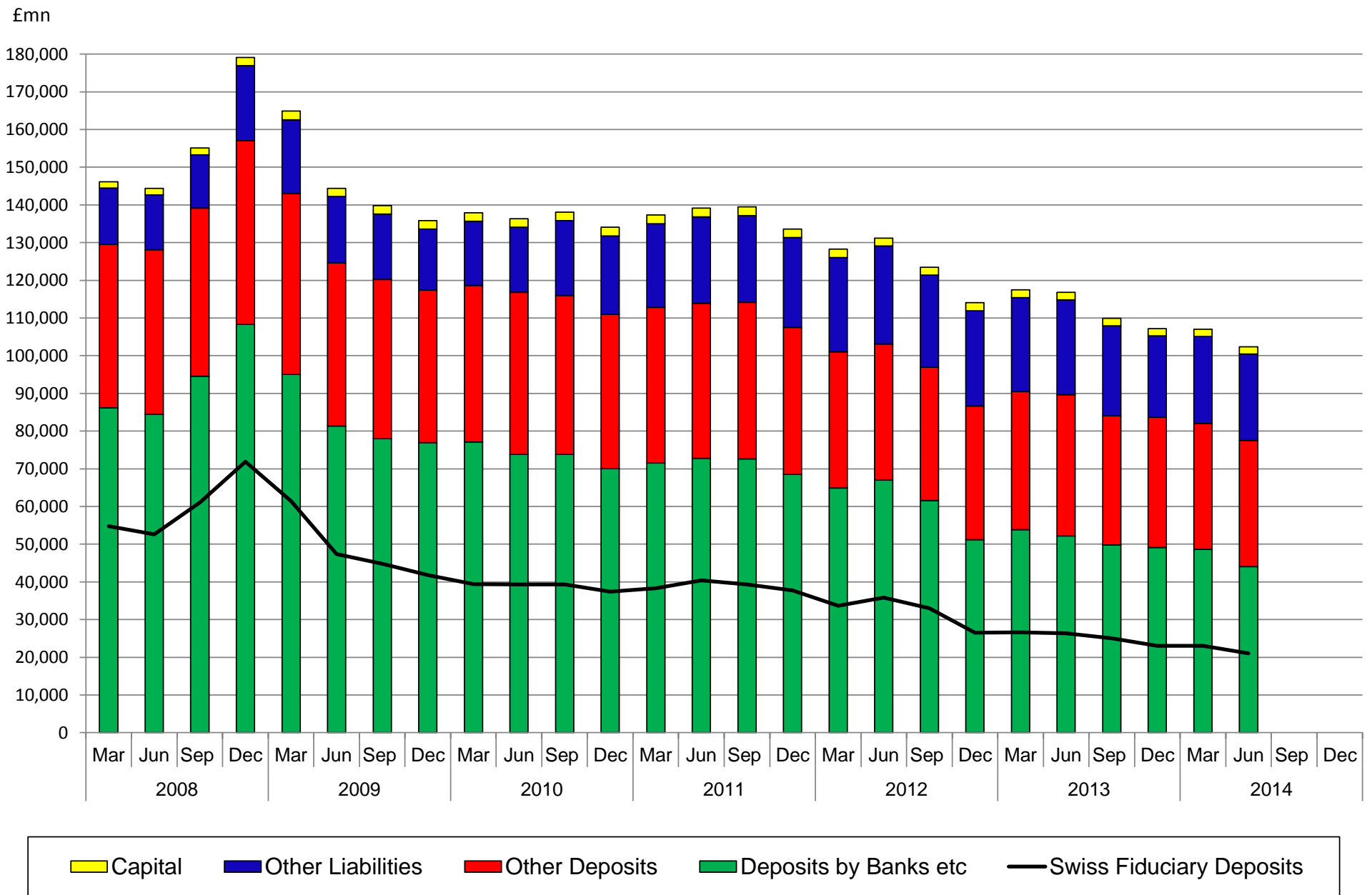
GUERNSEY FINANCIAL SERVICES COMMISSION

GUERNSEY BANKING SECTOR STATISTICS

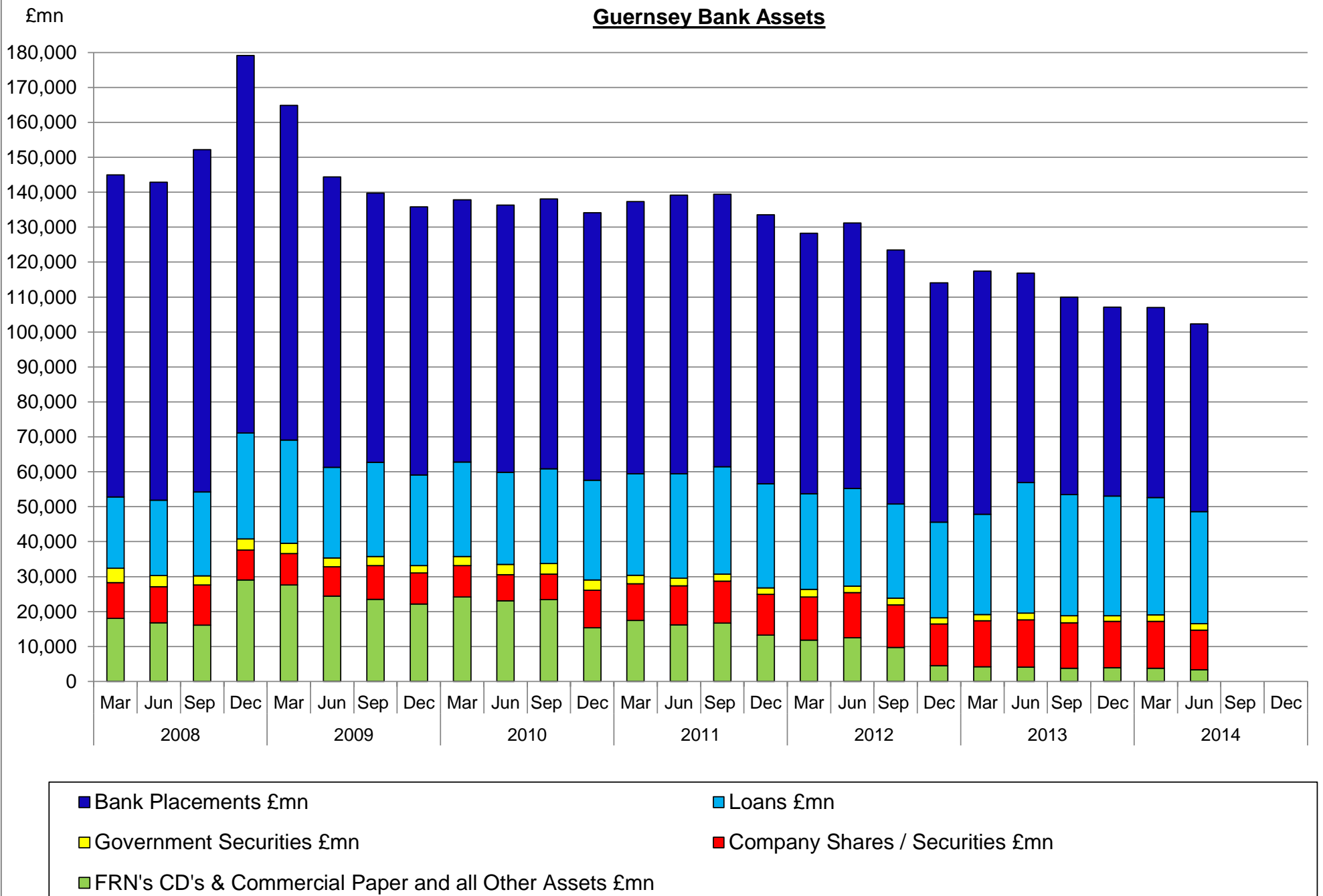
| | | Number of banks | Swiss fiduciary Deposits £mn | Other Deposits £mn | Total Deposits £mn | Quarterly change % | Total Assets / Liabilities £mn | Quarterly Change % |
|-------------|------------|-----------------|------------------------------|--------------------|--------------------|--------------------|--------------------------------|--------------------|
| 2012 | Mar | 35 | 33,696 | 67,296 | 100,992 | -6.1 | 128,272 | -4.0 |
| | Jun | 35 | 35,777 | 67,360 | 103,137 | 2.1 | 131,170 | 2.3 |
| | Sep | 34 | 33,042 | 63,900 | 96,942 | -6.0 | 123,459 | -5.9 |
| | Dec | 32 | 26,555 | 60,128 | 86,683 | -10.6 | 114,048 | -7.6 |
| 2013 | Mar | 32 | 26,567 | 63,954 | 90,521 | 4.4 | 117,477 | 3.0 |
| | Jun | 32 | 26,369 | 63,322 | 89,691 | -0.9 | 116,851 | -0.5 |
| | Sep | 32 | 24,988 | 59,091 | 84,079 | -6.3 | 109,946 | -5.9 |
| | Dec | 31 | 23,054 | 60,651 | 83,705 | -0.4 | 107,145 | -2.5 |
| 2014 | Mar | 31 | 23,048 | 58,978 | 82,026 | -2.0 | 107,010 | -0.1 |
| | Jun | 30 | 21,079 | 56,405 | 77,484 | -5.5 | 102,330 | -4.4 |
| | Sep | | | | | | | |
| | Dec | | | | | | | |



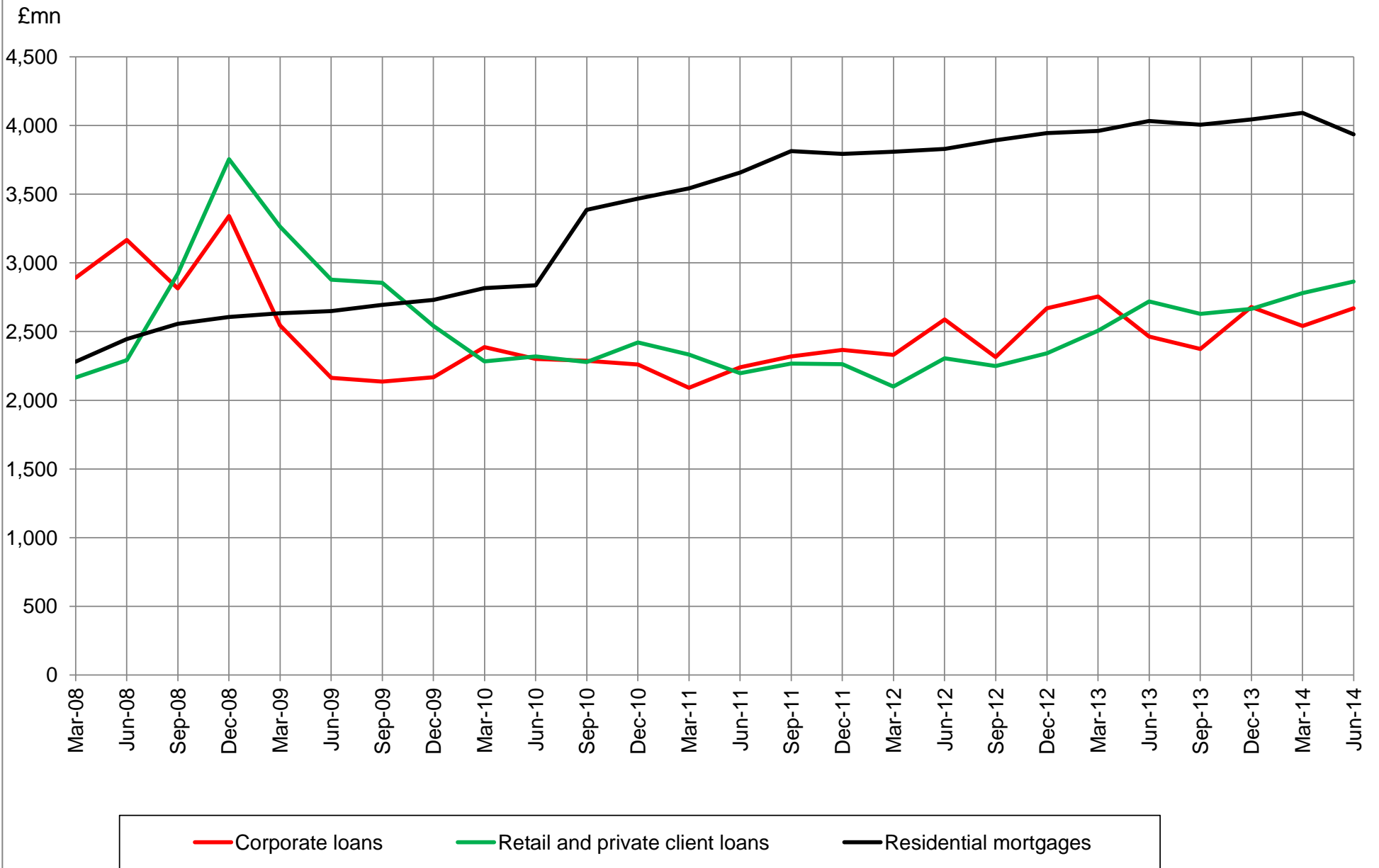
Guernsey Bank Liabilities



Guernsey Bank Assets



Selected loans and advances



Total Assets, Number of Licensees and F.T.E. Staff

