

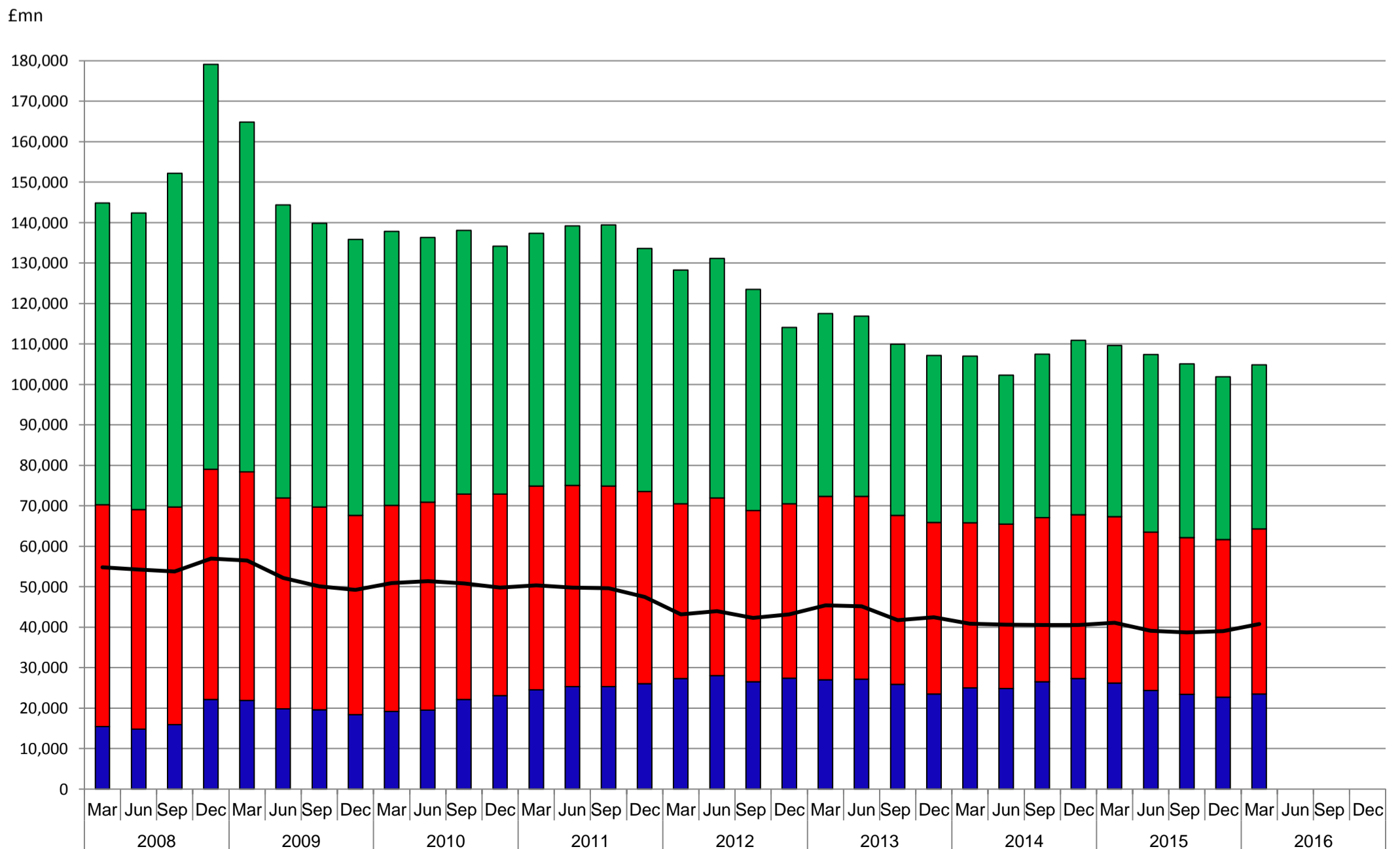
GUERNSEY FINANCIAL SERVICES COMMISSION

GUERNSEY BANKING SECTOR STATISTICS

| | | Number of banks | Bank Deposits £mn | Third Party Deposits £mn* | Annual change in third party deposits % | Total Deposits £mn | Other liabilities £mn e.g. capital, issues of debt | Total Liabilities £mn |
|------|-----|-----------------|-------------------|---------------------------|---|--------------------|--|-----------------------|
| 2012 | Mar | 35 | 57,795 | 43,197 | -14.2 | 100,992 | 27,280 | 128,272 |
| | Jun | 35 | 59,214 | 43,923 | -11.7 | 103,137 | 28,033 | 131,170 |
| | Sep | 34 | 54,641 | 42,301 | -14.7 | 96,942 | 26,517 | 123,459 |
| | Dec | 32 | 43,515 | 43,169 | -9.0 | 86,683 | 27,365 | 114,048 |
| 2013 | Mar | 32 | 45,148 | 45,372 | 5.0 | 90,521 | 26,957 | 117,477 |
| | Jun | 32 | 44,528 | 45,163 | 2.8 | 89,691 | 27,160 | 116,851 |
| | Sep | 32 | 42,355 | 41,725 | -1.4 | 84,079 | 25,866 | 109,946 |
| | Dec | 31 | 41,272 | 42,434 | -1.7 | 83,705 | 23,440 | 107,145 |
| 2014 | Mar | 31 | 41,194 | 40,832 | -10.0 | 82,026 | 24,984 | 107,010 |
| | Jun | 30 | 36,878 | 40,606 | -10.1 | 77,484 | 24,846 | 102,330 |
| | Sep | 30 | 40,405 | 40,548 | -2.8 | 80,953 | 26,499 | 107,452 |
| | Dec | 31 | 43,147 | 40,514 | -4.5 | 83,661 | 27,273 | 110,934 |
| 2015 | Mar | 31 | 42,281 | 41,127 | 0.7 | 83,407 | 26,183 | 109,590 |
| | Jun | 30 | 43,909 | 39,135 | -3.6 | 83,044 | 24,363 | 107,407 |
| | Sep | 29 | 42,937 | 38,705 | -4.5 | 81,642 | 23,432 | 105,075 |
| | Dec | 29 | 40,261 | 38,984 | -3.8 | 79,245 | 22,665 | 101,910 |
| 2016 | Mar | 29 | 40,580 | 40,756 | -0.9 | 81,337 | 23,491 | 104,827 |
| | Jun | | | | | | | |
| | Sep | | | | | | | |
| | Dec | | | | | | | |

* Includes non-bank financial institutions

Guernsey Bank Liabilities



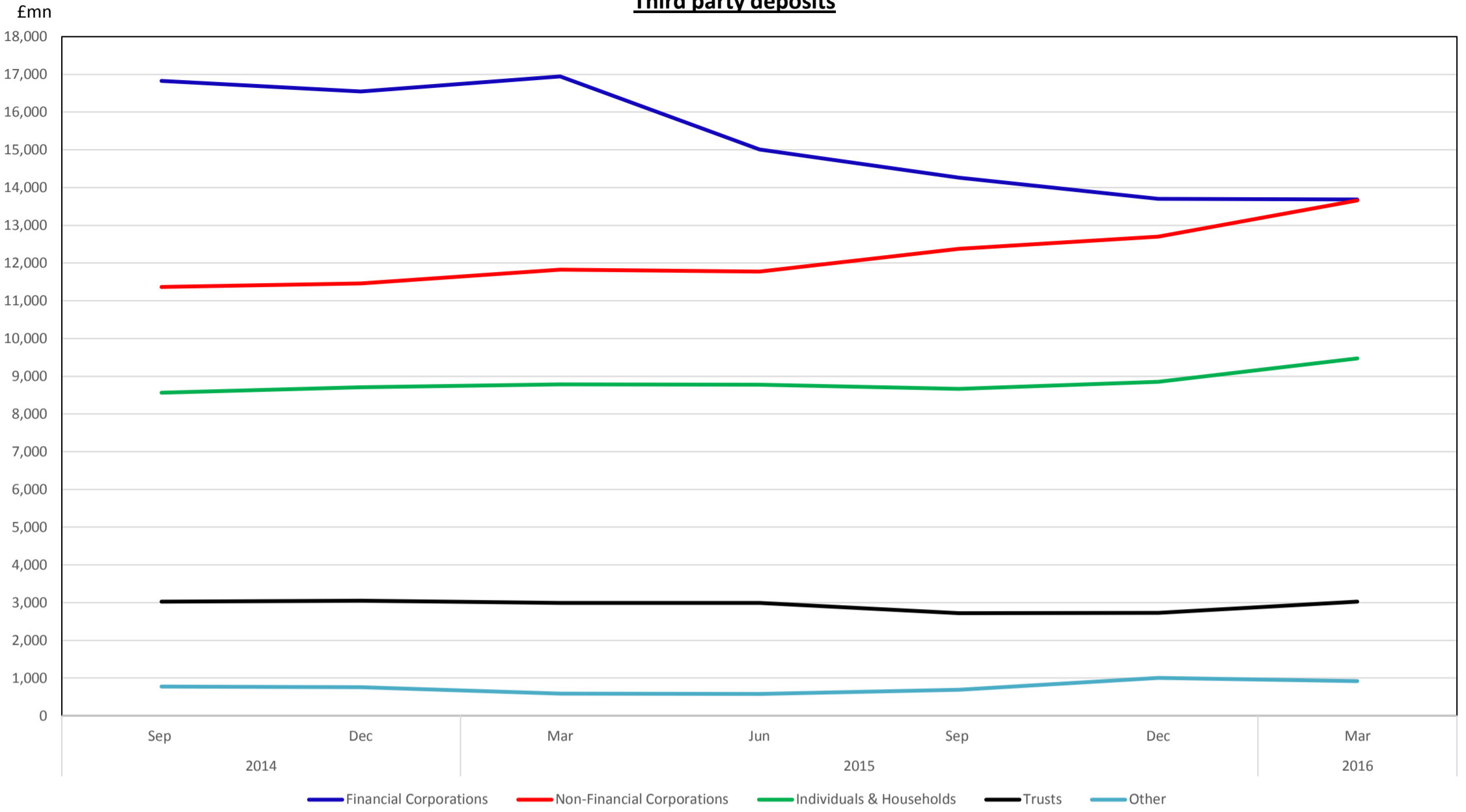
■ Bank Deposits

■ Third Party Deposits *

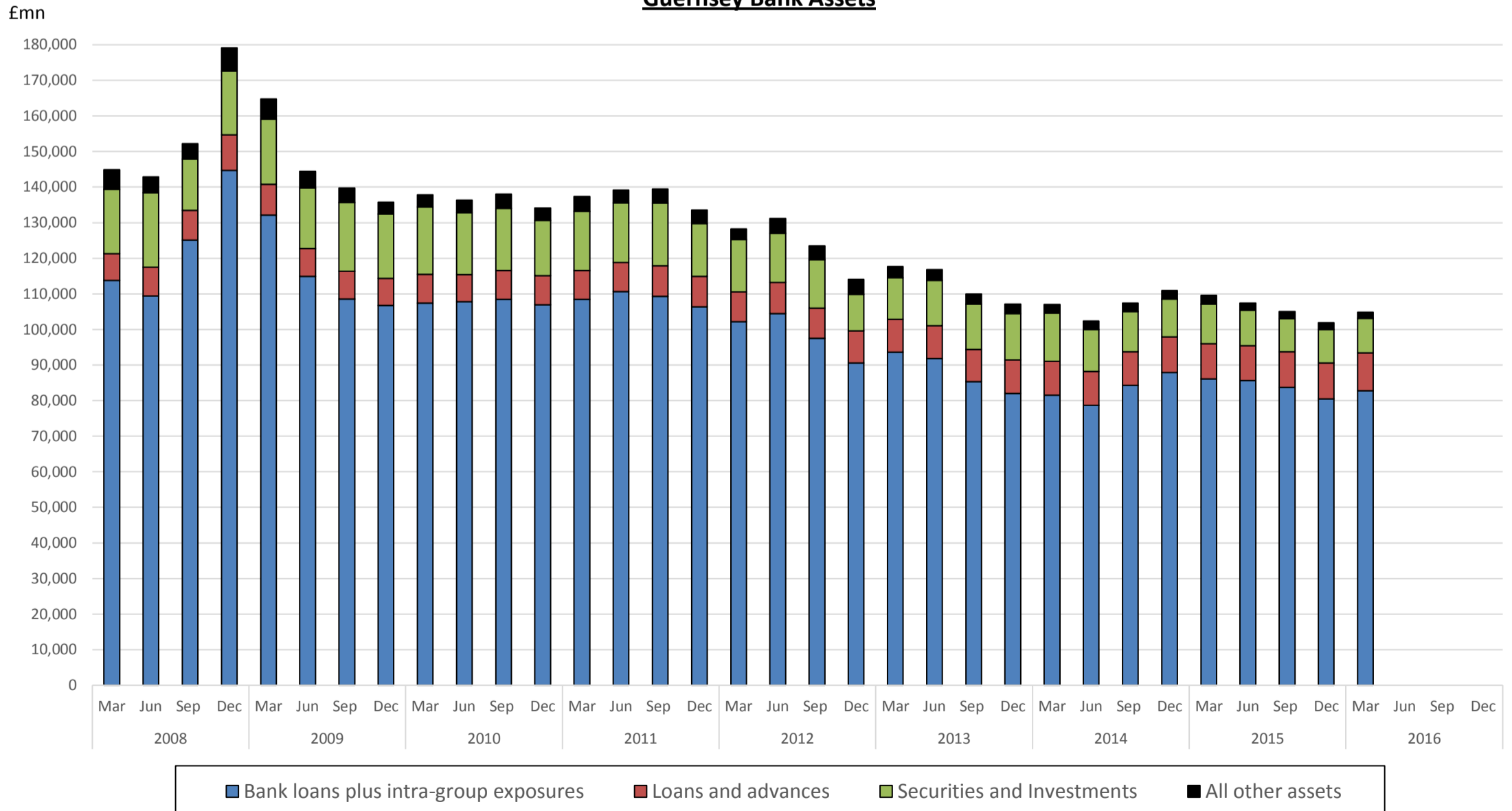
■ Other liabilities

* Includes non-bank financial institutions

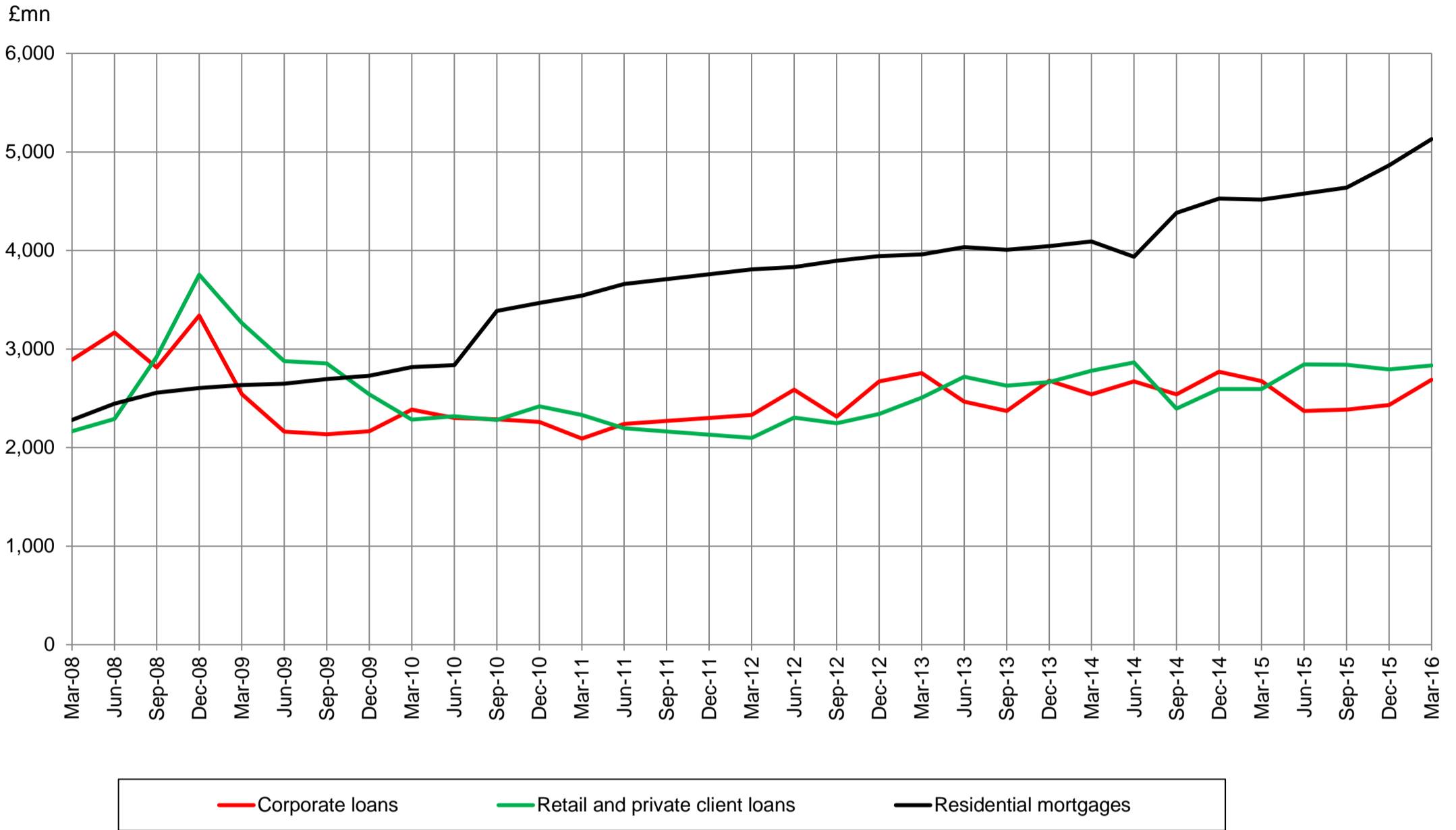
Third party deposits



Guernsey Bank Assets



Loans and advances



Total Assets, Number of Licensees and F.T.E. Staff

